

# Enterprise Security and Compliance Visibility

Get real-time security posture reports in the McAfee® ePolicy Orchestrator® (ePO™) software

**McAfee Compatible Solution**

eIQnetworks SecureVue 3.2 and McAfee ePO 4.0

eIQnetworks' SecureVue delivers to the McAfee ePO™ management platform a wide range of reports on log, configuration, asset, performance, vulnerability, and network flow data from McAfee products, as well as hundreds of other security and network devices, databases, and applications.

**The Business Problem**

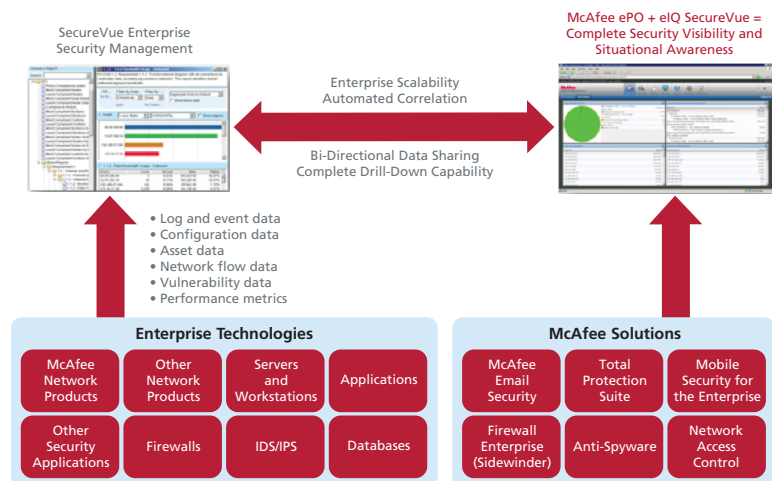
Sophisticated attacks continue to tax security and compliance operations teams. The proliferation of multiple point products complicates the ability to detect incidents and to find the root cause of breaches because the disparate tools don't share threat information. Moreover, audit preparation requires significant manual work to collect and report on compliance documentation from multiple data silos.

Enterprise customers are increasingly looking for solutions that increase efficiency and reduce operational costs without sacrificing performance.

**The Joint Solution**

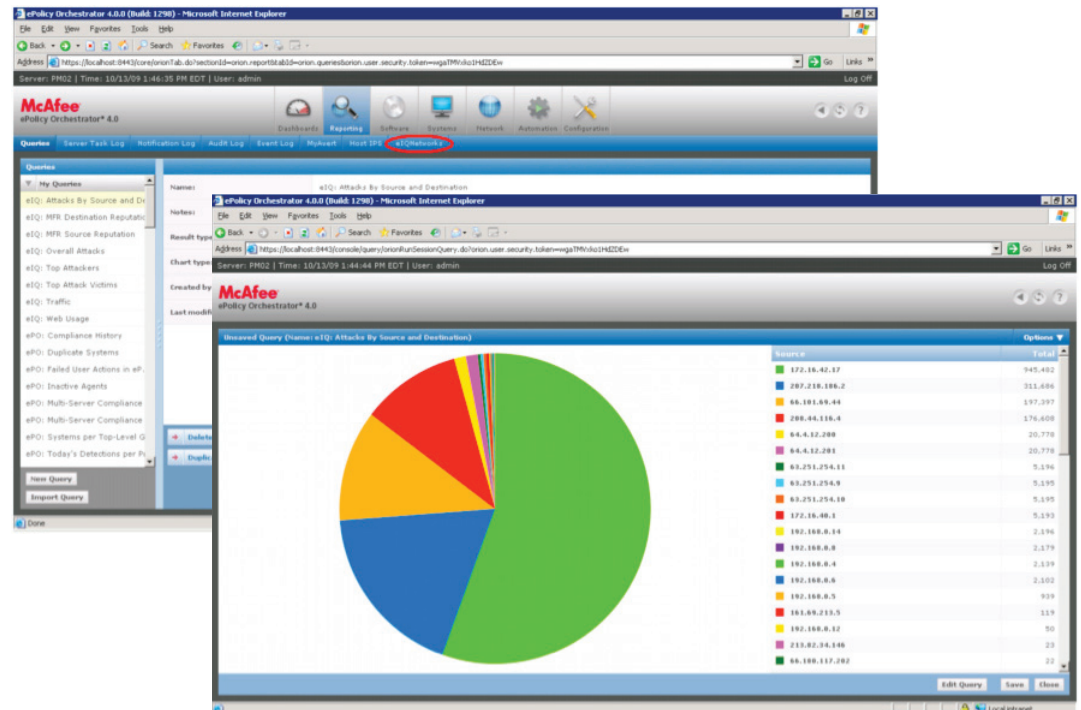
SecureVue from eIQnetworks extends traditional log management by collecting additional types of critical security information, including configuration, asset, performance, vulnerability, and network flow data on a centralized platform. This ensures that all teams work off the same data set with duplication of effort and exercise a new degree of agility created by understanding the relationships among these disparate sets of data.

SecureVue's bidirectional integration with the McAfee ePolicy Orchestrator management platform allows customers to gather data from all network, security, host, and endpoint devices and view security and compliance monitors, dashboards, and reports directly within ePO. More detailed forensic information is only a click away via links directly into eIQ's SecureVue console, allowing detailed investigations to happen on the fly.



### Streamlined Integration

- eIQnetworks SecureVue gathers data from McAfee products, including McAfee Firewall Enterprise, Network Security Platform, Web Gateway, Vulnerability Manager, VirusScan® Enterprise, ePO software, and other McAfee security solutions, as well as hundreds of operating systems, network devices, and other security products
- SecureVue correlates and analyzes this data, sending summary information and reports directly to the ePO console
- McAfee ePO administrators click on the SecureVue dashboard to see relevant reports within ePO software, or they can launch the SecureVue console for detailed forensic analysis with more granular data that may have been aggregated and stored over long periods of time



### About eIQnetworks SecureVue

SecureVue takes the next step in the evolution of security information and event management (SIEM) products by providing highly scalable, enterprise SIEM and log management features while adding integrated compliance management and automation to reduce the risk of failing a compliance audit. SecureVue also tracks element configuration data, reducing security risk and delivering faster and better opportunities to detect and prevent security attacks.

### About McAfee ePolicy Orchestrator (ePO) software

McAfee ePO software is the industry-leading security and compliance management platform. With its single-agent and single-console architecture, ePO software provides intelligent protection that is automated and actionable, enabling organizations to reduce costs and improve threat protection and compliance.

